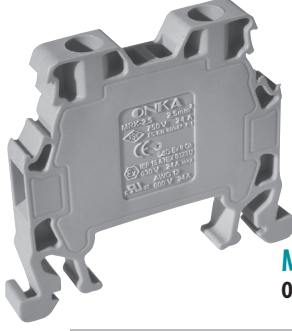
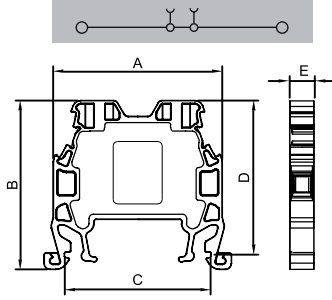


MRK SERIES SCREWED TYPE RAIL TERMINAL BLOCKS MRK SERİSİ VİDALI TİP RAY KLEMENSLER



MRK 2.5

Order No: 1012



Dimensions Ölçüler (mm)	A	B	C	D	E
	40,0	40,0	34,5	36,5	5,9

MATERIAL / MATERYAL

Body / Gövde	PA6.6 V2
Bridge / Köprü	Copper / Bakır
Contact / Kontak	CK45 Steel
Screw/Vida	Steel / Çelik
Temp./Sıcaklık	-40 °C, +140 °C
Cable Strip L. / Soyma Boyu	10 mm
Torque / Tork	0,4 Nm

DATA / VERİ	TSE / CE	UL
Voltage / Gerilim	750 V	300 V
Current / Akım	24 A	24 A
Section / Kesit	2,5 mm ²	12 AWG
Norm	EN-60947-7-1	UL 1059

RENKLER / COLOURS

RENK/COLOUR	Order No. / Sip.No.	Pcs. / Ad.
GREY / GRİ	1012	100
CREAM / KREM	1013	100
BLACK / SİYAH	1014	100
BLUE / MAVİ	1015	100
BROWN/K.RENGİ	1016	100
RED / KIRMIZI	1017	100
YELLOW / SARI	1018	100
GREEN / YEŞİL	1019	100

ACCESSORIES / AKSESUARLAR

Cross Connection / Köprü	Order No./ Sip. No.	Section/ Kesit	Pcs./ Ad.
	1925	2,5 / 2	100
	1926	2,5 / 3	100
	1927	2,5 / 4	75
	1928	2,5 / 10	30
	1929	2,5 / 20	20
Stopper / Durdurucu	1202,1222,1212		
Group Sticker/Grup Etiketi	1232		
Marking / Markalama	9770 / 4440 / 4442 / 9540 / 7301		