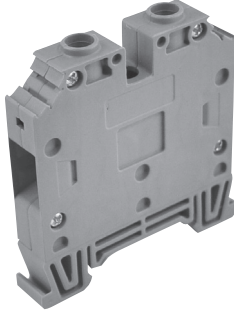
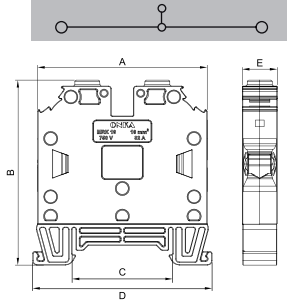


MRK SERIES SCREWED TYPE RAIL TERMINAL BLOCKS MRK SERİSİ VİDALI TİP RAY KLEMENSLER



MRK 16
Order No: 1052



Dimensions Ölçüler (mm)	A	B	C	D	E
	58,0	63,2	34,5	61,2	12,0

MATERIAL / MATERYAL

Body / Gövde	PA6.6 V2
Bridge / Köprü	Copper / Bakır
Contact / Kontak	CK45 Steel / Çelik
Screw / Vida	Steel / Çelik
Temp./ Sıcaklık	-40 °C, +140 °C
Cable Strip L. / Soyma Boyu	18 mm
Torque / Tork	2,0 Nm

DATA / VERİ	TSE / CE	UL
Voltage / Gerilim	750 V	600 V
Current / Akım	76 A	63 A
Section / Kesit	16 mm ²	6 AWG
Norm	EN-60947-7-1	UL 1059

RENKLER / COLOURS

RENK / COLOUR	Order No. / Sip.No.	Pcs. / Ad.
GREY / GRİ	1052	50
CREAM / KREM	1053	50
BLACK / SİYAH	1054	50
BLUE / MAVİ	1055	50
BROWN / K.RENGİ	1056	50
RED / KIRMIZI	1057	50
YELLOW / SARI	1058	50
GREEN / YEŞİL	1059	50

ACCESSORIES / AKSESUARLAR

Cross Connection / Köprü	Order No./ Sip. No.	Section/ Kesit	Pcs./ Ad.
	2257	16 / 2	50
	2258	16 / 3	40
	2259	16 / 4	40
	2260	16 / 5	25
	2265	16 / 10	10
Stopper / Durdurucu	1202, 1222, 1212		
Group Sticker / Grup Etiketi	1232		
Marking / Markalama	9770 / 4440 / 4442 / 9540 / 7301		