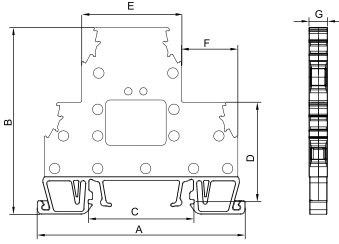
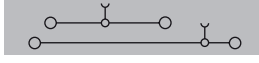
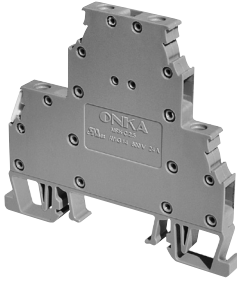


MRK SERIES SCREWED TYPE DOUBLE RAIL TERMINAL BLOCKS MRK SERİSİ VİDALI TİP ÇİFT KATLI RAY KLEMENSLER



MRK-C 4
Order No: 1652

Dimensions Ölçüler (mm)	A	B	C	D	E	F	G
	67,0	61,0	34,5	32,5	32,5	18,0	6,7

MATERIAL / MATERYAL

Body / Gövde	PA6.6 V2
Bridge / Köprü	Copper / Bakır
Contact / Kontak	CK45 Steel
Screw / Vida	Steel / Çelik
Temp./Sıcaklık	-40 °C, +140 °C
Cable Strip L. / Soyma Boyu	9 mm
Torque / Tork	0,5 Nm

DATA / VERİ	TSE / CE	UL
Voltage / Gerilim	500 V	300 V
Current / Akım	32 A	32 A
Section / Kesit	4 mm ²	10 AWG
Norm	EN-60947-7-1	UL 1059

RENKLER / COLOURS

RENK / COLOUR	Order No. / Sip.No.	Pcs. / Ad.
GREY / GRİ	1652	50
CREAM / KREM	1653	50
BLACK / SİYAH	1654	50
BLUE / MAVİ	1655	50
BROWN / K.RENGİ	1656	50
RED / KIRMIZI	1657	50
YELLOW / SARI	1658	50
GREEN / YEŞİL	1659	50

ACCESSORIES / AKSESUARLAR

Cross Connection / Köprü	Order No./ Sip. No.	Section/ Kesit	Pcs./ Ad.
	1930	4 / 2	100
	1931	4 / 3	50
	1932	4 / 4	50
	1933	4 / 10	30
	1934	4 / 20	20
Stopper / Durdurucu	1202, 1222, 1212		
Group Sticker / Grup Etiketi	1232		
Marking / Markalama	9770 / 4440 / 4442 / 9540 / 7301		
Bridged / Köprülü	1662		
Diode / Diyotlu	1672		
Led / Ledli	1682		